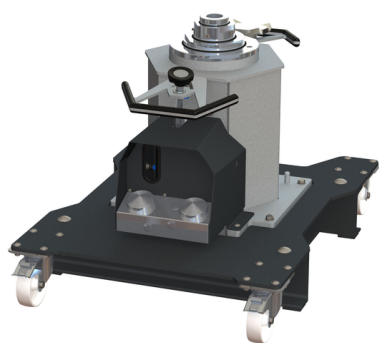


LIFTING TECHNOLOGY

PIT JACK

MPJ 16.5/1200 3S FA
VP 454281



MPJ 16.5/1200 3S FA

VP 454281

The axle and transmission jack lifts up to 16.5 t. The floor-running axle and transmission jack, with triple telescopic cylinders (max. stroke 1200 mm), is freely moveable; at 1000 kg it automatically lowers. Load-free, a compressed air speed control function ensures fast movement of the two telescopic segments as well as fast retraction of the piston rods. The equipment also includes an air motor with foot pedal control for lifting the piston rod under load.

PRODUCT DETAILS/ACCESSORIES

3-stage telescopic, free-moving, floor-running

Description:

Automatic axle and transmission jack with pneumatic motor and fast control in slim design specifically for dismantling assemblies and lifting vehicles up to 16.5 t

Control:

- Unique synchronised telescopic lifting cylinder for quick load lifting with fast control
- Efficient fast control for UP and DOWN movement integrated as standard
- Precision, user-friendly foot control using compact and robust operating unit for quick lift and load lift
- Delicate and precision lowering of the pit jack with tried & tested system with integrated dead man's control
- Telescopic stages protected against corrosion thanks to the Venturi effect (separation of hydraulic oil and airflow)
- Integrated cover to protect against unintentional operation

Design:

- Freely movable floor-running pit jack for flexible use at various work locations, e.g. workshops or work pit

- Floor-running carriage with four guide rollers, two of which are fitted with brakes to prevent rolling away (without load)
- Spring-based roll guard: jack automatically lowers itself to floor once a load capacity of about 1000 kg is reached, securing itself in the process
- Integrated inspection window for checking oil quality and quantity of the pit jack
- Optimised removal of the dismantled units thanks to low construction height of the jack due to ideal arrangement of the lifting unit in the carriage
- With its non-slip coating the carriage can be used as a secure working platform for ergonomic reasons
- Corrosion-resistant piston rods thanks to self-lubrication
- High-quality powder-coating protects against corrosive liquids and elevates quality look and feel on a lasting basis

Scope of delivery:

- Pit jack with hydro-pneumatic automatic control system
- Carriage with four guide rollers
- Standard support lugs 120 x 120 mm
- Operating instructions
- EC conformity certificate
- Colour: Jack base frame RAL 7040
 - Attachments and carriage RAL 7016

TECHNICAL DATA

| | |
|---------------------------------|-------------------|
| Load capacity (CE) | 16,500 kg |
| Fast stroke power | 600 kg |
| Stroke distance | 1200 mm |
| Lifting levels | 3 |
| Min. load pick-up height | 683 mm |
| Max. lifting height | 1883 mm |
| Chassis (L x W) | 1010 x 760 mm |
| Rollers | 80 mm (polyamide) |
| Support diameter inside/outside | 45/80 mm |
| Piston rod diameter | 80/115/170 mm |

LIFTING TECHNOLOGY PIT JACK

MPJ 16.5/1200 3S FA
VP 454281



TECHNICAL DATA

| | |
|----------------------|---------------------|
| Oil quantity/quality | 27.5 l / HLP-D 10 |
| Drive | 350 l/min. 7-10 bar |
| Operating pressure | 190 bar |
| Weight | 362 kg |

ACCESSORIES

ACCESSORIES - CARRIAGE

| | |
|-----------|---|
| VZ 975920 | Jack-mounted compressed air maintenance unit |
| VZ 975744 | Pneumatic manual control cylinder with magnetic bracket |
| VZ 975919 | Precision-control foot lever |

ACCESSORIES - TRAVERSES, SUPPORT BRIDGES, SUPPORT SYST.

| | |
|-----------|---|
| VZ 975670 | Self-locking axle lifting beam with 14.5 t support system MODEL: SAT 14.5-760 |
| VZ 975813 | Self-locking axle lifting beam with 14.5 t support system MODEL: SAT 14.5-820 |
| VZ 975622 | Self-locking axle lifting beam with 14.5 t support system MODEL: SAT 14.5-910 STOCK |
| VZ 975741 | Self-locking axle lifting beam with 14.5 t support system MODEL: SAT 14.5-910L |
| VZ 975743 | SAT Rollers Retrofit Kit, Spring Mounted, with Plastic Rollers |
| VZ 975814 | SAT Wheel Deflector Plates (2 pcs) |
| VZ 975820 | Spacer Block for Support Systems SAT (65 x 110 x 320 mm) |
| VZ 975903 | Axle lifting beam up to 15 t Adjustment range max. 1010 mm MODEL: AT 15 |
| VZ 975688 | Axle Traverse Length Variation |
| VZ 975906 | Axle traverse Long for busses, com. vehicles, 16.5t load cap. MODEL: AT 16.5 L1500 |
| VZ 975696 | Axle Crossbar Load Capacity 3.5 t Model: ATV 3.5 |
| VZ 975925 | Support bridge for axle traverses up to 14.5 t load capac. MODEL: TAB 15 |
| VZ 975326 | Support Bridge AB w/o Centre Cut-Out up to 14,5 t Load Cpc. MODEL: AB 15 |
| VZ 975686 | Support System Version D/F |
| VZ 975687 | Support System Version E |

ACCESSORIES - LOAD LIFTING PADS, LIFTING PADS, EXTENDERS, SUPPORT TUBES

| | |
|-----------|---|
| VZ 975280 | Narrow Lifting Pad, 20 t Load Capacity, galvanized, up to 100 mm (Pin Diameter 45 mm) |
| VZ 975285 | Large Lifting Pad, galvanized, Load Capacity 20 t MODEL: GP 175/20 |
| VZ 975283 | Large Lifting Pad, galvanized, Load Capacity 16.5 t MODEL: GP 220 |

| | |
|-----------|---|
| VZ 975569 | Pads with mushroom support N with pin diameter 45 mm MODEL: PS-N |
| VZ 975409 | Wooden Lifting Pad, 6 - 16 t Load Capacity, Prismatic Design, MODEL: HP 06-16 |
| VZ 975287 | Lifting Pad w. Rubber Surface, 11 t Load Capacity MODEL: RPG 10 |
| VZ 975289 | Plug-In Extender, L = 100 mm, MODEL: ZS 100/45 |
| VZ 975290 | Plug-In Extender, L = 150 mm, MODEL: ZS 150/45 |
| VZ 975410 | Plug-In Extender, L = 200 mm MODEL: ZS 200/45 |
| VZ 971221 | Support Plate Extension 100 mm galvanized (2 pcs.) Diameter of supports 35 mm |
| VZ 975330 | Support Tube L = 400 mm, Load Capacity: 20 t (Pin Diam. 45 mm) |
| VZ 975331 | Support Tube L = 600 mm, Load Capacity: 20 t (Pin Diameter 45 mm) |
| VZ 975571 | Support Tube L = 800 mm, Load Capacity: 15 t (Pin Diameter 45 mm) |
| VZ 975414 | Spacer Block for Support Systems TAB (100 x 140 x 450 mm) |
| VZ 975732 | Gearbox Plate, Load Cpc. 1.0t Model: GP 1000 |
| VP 975915 | Gearbox Mounting Tool with swivelling flat supports MODEL: GMT 800 |
| VZ 975916 | Swivel supports for GMT 800 w. locking function |
| VZ 975917 | Angle clamp supports for GMT 800 with rubber pad |
| VZ 975918 | Semicircular flex supports for GMT 800 with rubber pads |
| VZ 975611 | Pit crossing continuously adjustable for pits w/o wheel guides |
| VZ 975612 | Pit crossing continuously adjustable for pits with wheel guides |
| VZ 975613 | Railings for pit crossing continuously adjustable |

SUPPLEMENTARY CHARGES

| | |
|-----------|--|
| VT 998106 | Transportkosten Grubenheber Abstütssystem, Getriebeplatten |
| VT 998108 | Transportkosten Abstütssystem, Getriebeplatten |
| VM 996148 | Montagekosten Grubenheber |
| VV 997600 | Packaging Floor-running jack not stackable -EUROPE/OVERSEAS- |
| VV 997601 | Packaging Lifting beams, gearbox plates, stackable -EUROPE/OVERSEAS- |