

# MAHA USA Mobile Column Lift Annual Preventative Maintenance



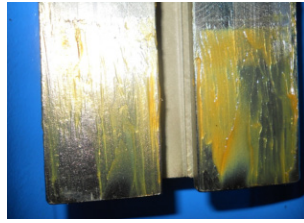
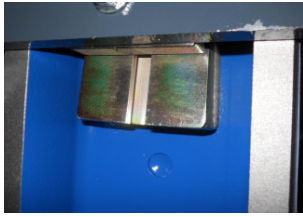
**\* WARNING \***

**Prior to inspecting wiring, high voltage switches or any moving parts; UNPLUG from the power source. Turn off the main switch, lock it and tag it. Activate the emergency stop switch.**

**Checklist:**

Column	Status	Comments
Wipe down the entire column, using a non-abrasive cleaner, including the front flap.		
Once cleaned, spray the front flap with WD-40.		
Check for any extensive wear or corrosion.		
External Cables	Status	Comments
<b>**Refer to <i>Warning</i> at beginning of checklist before proceeding with this step**</b>		
Visually inspect all of the external cables, including spiral cable and remote control if applicable, for any damage.		
Safety Tape and Decals	Status	Comments
Visually inspect all safety tape and all decals for damage.		
If there is damage or they are illegible, replace with new tape or decals by contacting the MAHA USA Service Department at 1-866-518-4537.		
Safety Wedge	Status	Comments
Lift or lower the carriage 4-5' from the ground. Make sure the carriage is <b>NOT</b> sitting on the wedge.		
There should be between 2.5" - 3" of wedge showing from the bottom of the carriage. If not, raise the carriage until it is not on the wedge.		
Once the carriage is off of the wedge you should easily be able to move the wedge from side to side with your hand.		
<b>WITHOUT</b> removing the wedge from the carriage, wipe away any debris with a clean dry rag. Looking at the back of the carriage, reapply a small amount of grease to the outside part of the wedge facing towards you		

Picture Reference:



<b>Wheels</b>	Status	Comments
Visually inspect the wheels on both the column and jack.		
Remove any debris to avoid damage.		
<b>Charging</b> (for battery lifts only)	Status	Comments
At least once a week, charge each column overnight as well as over the weekend, depending on usage.		
If lifts will not be used for a longer period of time, charge before storing.		
If lifts will remain in storage for more than one week, turn lifts on and run up and down once a week to ensure they are operating correctly.		
<b>Emergency Stop Button/Switch</b>	Status	Comments
3-Phase Electric MCL: Activate the emergency stop button to insure it functions correctly.		
Battery Wireless MCL: Activate the emergency stop by turning off the power switch while running the lift.		
Visually inspect the button/switch for any damage and check it is in properly working.		

Picture Reference:



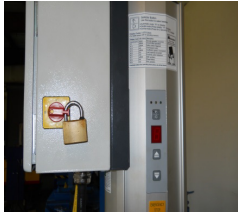
*3-Phase MCL's E-Stop*

*Wireless MCL's E-Stop*

<b>Main Power Switch with Lock Out</b>	Status	Comments
Ensure the power switch operates easily.		
Look for any visible damage to the power switch.		

With the power switch in the “off” position, make certain the lock out works correctly and that there is no damage to it.		
The switch should <b>NOT</b> turn to “ON” if lock out is operating correctly.		

Picture Reference:



3-Phase MCL's Lock Out    Wireless MCL's Lock Out

“UP” and “DOWN” Buttons	Status	Comments
Check the up and down buttons operate the lifts correctly.		
Look to see if the LED and segment display are accurate.		

Main Ball Screw	Status	Comments
-----------------	--------	----------

**\*\*Refer to *Warning* at beginning of checklist before proceeding with this step\*\***

Visually inspect the ball screw for any damage.		
Remove the front flap and wipe off any dried built-up grease or dirt with a clean dry rag.		

Solenoid	Status	Comments
Lift the carriage 2”-3’ from the ground. Press the down button and visually inspect the solenoid, which is located between the column and the carriage, to ensure the pin is firing and working correctly.		
When the down button is released the pin should go back into the solenoid and the silver locking lever should move away from the column.		

Picture Reference:



**\*\* If damage is noted or malfunction occurs during any of these steps, immediately contact the MAHA USA service department at 1-866-518-4537\*\***



Serial Number: \_\_\_\_\_ Location: \_\_\_\_\_

Service Date: \_\_\_\_\_ Inspected By: \_\_\_\_\_

Comments and/or Problems Found/Repaired: \_\_\_\_\_  
\_\_\_\_\_  
\_\_\_\_\_